

# Encore™

Siding



**CertainTeed**  
SAINT-GOBAIN



Encore siding combines high quality with proven features to help you achieve the look you desire.

Encore™ Siding



Siding: Encore Double 4" Clapboard and Cedar Impressions Half-Rounds in desert tan.  
Trim: Vinyl Carpentry® & Restoration Millwork®.

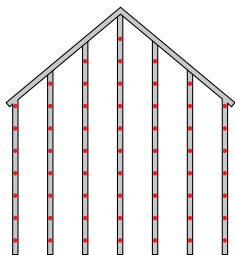
### The STUDfinder™ Installation System

STUDfinder combines precisely spaced nail slots with indicator letters, designed for accurate and secure installation.

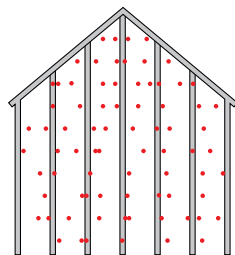


### STUDfinder for Accuracy

- Nail slots align with 16" on-center standards for stud spacing.
- Indicator letters help:
  - Determine location of studs
  - Ensure nails are positioned correctly
  - Ensure correct number of nails are used



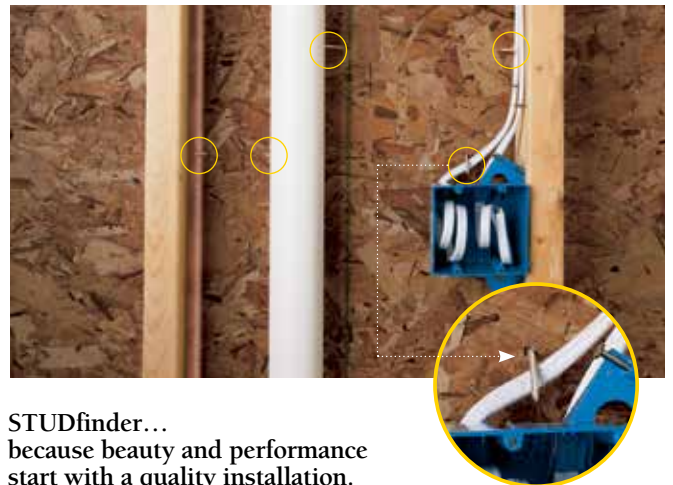
With STUDfinder



Possible outcome without STUDfinder

### STUDfinder for Security and Performance

- Nailing to studs provides a strong and secure connection.
- Protects against blow offs from under nailing.
- Protects against buckling from over nailing.
- Helps avoid nailing into hazardous items between studs like plumbing or wiring.



STUDfinder... because beauty and performance start with a quality installation.



# GREAT LOOKS AND AFFORDABILITY



**Triple 3" Woodgrain Clapboard in savannah wicker**

**Double 4" Woodgrain Clapboard in natural clay**

**Double 5" Woodgrain Clapboard in sterling gray**

**Double 4-1/2" Woodgrain Dutchlap in herringbone**

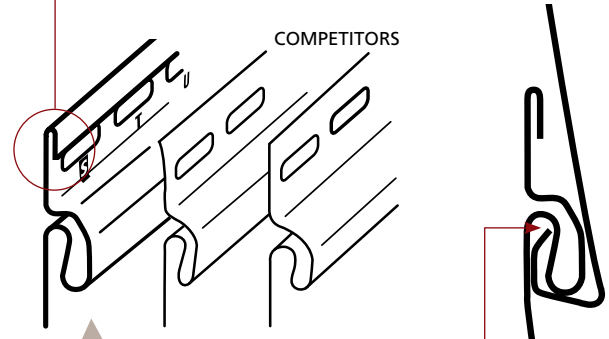
## FAST FACTS

LOW GLOSS COLORS	15 Low-Gloss Colors with Coordinating Trim Colors
STYLES AND FINISHES	Triple 3" Woodgrain Clapboard Double 4" Woodgrain Clapboard Double 5" Woodgrain Clapboard Double 4-1/2" Woodgrain Dutchlap
THICKNESS	.040" Nominal
NAIL HEM AND LOCK	STUDfinder™ Installation System RigidForm™ 210 Nail Hem Technology and DuraLock® Post-Formed Lock
PANEL PROJECTION	1/2"
FIRE RATING	Class 1(A)
WARRANTY	Lifetime Limited with PermaColor™ Lifetime Fade Protection

## RigidForm™ Technology

RigidForm 210 (rolled-over nail hem) technology stiffens siding for a straighter-on-the-wall appearance and has been tested\* to withstand wind load pressures up to 210 mph.

\* Wind load rating per VSI wind speed calculation guidelines.



**DuraLock®** features an oversized rigid tear-drop shape which is substantially larger than many competitors' locks, providing secure installation.

The angular locking leg creates a secure, snap-fit installation, allowing for necessary expansion and contraction.



Color performance, impact resistance and durability are assured through our exclusive PermaColor™ System, a blend of our own Certavin™ resin, superior micro-ingredients and state-of-the-art pigment chemistry.

	Triple 3" Clapboard (woodgrain)	Double 4" Clapboard (woodgrain)	Double 5" Clapboard (woodgrain)	Double 4-1/2" Dutchlap (woodgrain)
Castle Stone		●	●	●
Sterling Gray	●	●	●	●
Oxford Blue	●	●	●	●
Seagrass		●	●	●
Cypress		●	●	●
Herringbone	●	●	●	●
Sandstone Beige		●	●	●
Desert Tan	●	●	●	●
Natural Clay	●	●	●	●
Savannah Wicker	●	●	●	●
Light Maple		●	●	●
Buckskin		●	●	●
Heritage Cream	●	●	●	●
Snow		●	●	●
Colonial White	●	●	●	●



Start exploring preset color combinations and create your own custom exterior with on-line, interactive tools, designed to help you "Visualize Your Home".  
**Start now at [certainteed.com/colortools](http://certainteed.com/colortools)**

**NOTE:** Colors throughout this brochure are simulated. Consult product samples before making final selection.

◀ **Front Cover**  
Siding: **Encore Double 4" Clapboard in castle stone.**  
Trim: **Vinyl Carpentry® & Restoration Millwork®.**



CertainTeed products are designed to work together and complement each other in color and style to give any home a beautiful finished look.



POLYMER SHAKES & SHINGLES



VINYL SIDING



INSULATED SIDING



SOFFIT



PVC EXTERIOR TRIM & BEADBOARD



VINYL CARPENTRY® TRIM



STONE



HOUSEWRAP



ROOFING AND VENTILATION



DECKING AND RAILING



MOLDED FENCE



EXTRUDED FENCE



[facebook.com/certainteedCurbAppeal](https://facebook.com/certainteedCurbAppeal)



[YouTube youtube.com/ctCurbAppeal](https://youtube.com/ctCurbAppeal)



**CertainTeed Corporation**

CEILING • DECKING • FENCE • GYPSUM • INSULATION • RAILING • ROOFING • SIDING • TRIM

20 Moores Road Malvern, PA 19355 Professional: 800-233-8990 Consumer: 800-782-8777 [certainteed.com](https://certainteed.com)

© 01/19 CertainTeed Corporation, Printed in the USA, Code No. CTS458